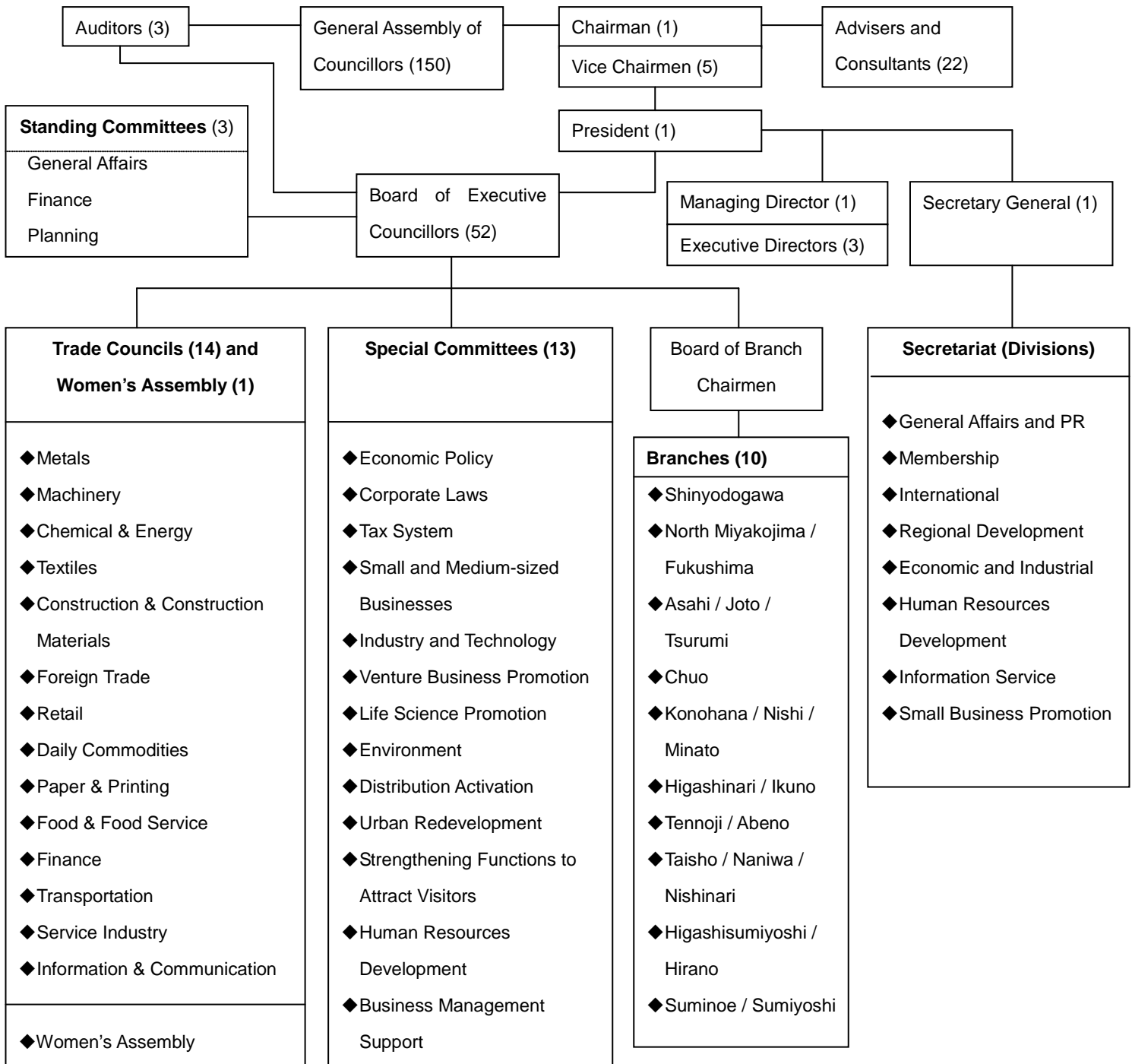


## ◆ Organization



## ◆ Board of Executives (Revised in April, 2010)



**Chairman** Shigetaka Sato (Chairman & CEO, Keihan Electric Railway Co., Ltd.)

### **Vice Chairmen**

Takeo Higuchi (Chairman & CEO, Daiwa House Industry Co., Ltd.)

Teiichi Nishimura (President, Sakura Color Products Corporation)

Makoto Kato (Senior Corporate Adviser, ITOCHU Corporation)

Katsuhiko Machida (Chairman & CEO, Sharp Corporation)

Atsushi Kojima (Director and Senior Adviser, Osaka Restaurant Management Association)

### **President**

Masahiro Nadamoto

### **Managing Director, Secretary General**

Kenji Nishida

### **Executive Director, General Manager, International Division**

Yasutsugu Kohzuki

### **Executive Director, General Manager, Small Business Consulting Division**

Kiyozumi Mori

### **Executive Director, General Manager, General Affairs and PR Division**

Tatsuki Kodama